

EMERGING ARCHITECTS

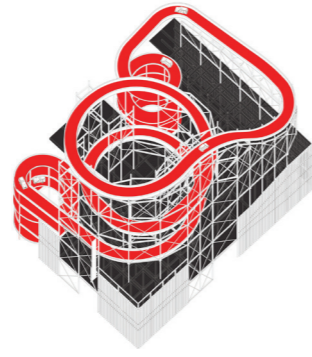
John McAslan + Partners / Student Exhibition

15.04.2016

Aoibhin McGinley / Glasgow School of Art
 Aubrey Zacharias / University of British Columbia
 Demetri Zacharia / The CASS School of Architecture
 Elena Petrasheva / University of Greenwich
 Eliot Hill / University of Westminster
 Ignacio Lee / Glasgow School of Art
 Jake Aiken Winter / The CASS School of Architecture
 Joe Travers-Jones / Bartlett School of Architecture
 Sophie Samuels / Manchester School of Architecture
 Luke Peckham / Liverpool School of Architecture
 Maeve Lock / Northumbria University
 Mirsad Krasniji / The CASS School of Architecture
 Neil Quinn / Central Saint Martins
 Oksana Lastovetsky / Dublin School of Architecture



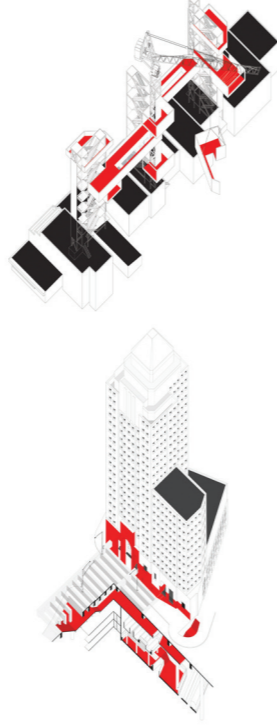
Title of Work: Project for a City
Name: Aubrey Zacharias
School: University of British Columbia SALA
Hometown: Salt Spring Island
Short Bio: Aubrey is originally from Salt Spring Island, British Columbia, Canada. While earning a Master's degree in Architecture at the University of British Columbia, he co-directed a small exhibition design/fabrication practice, worked with the Vancouver Art Gallery, the Museum of Vancouver, as well as a various Vancouver based architectural firms. He has recently relocated to London, where he has been working with John McAslan + Partners. On his own time, he draws and hunts for the perfect sauna.



Project for a City

Seemingly mundane elements of architecture have transformed and shaped Vancouver's urban environment. These elements are systems of infrastructure embedded with regulatory requirements, political calculations, and cultural preferences that have become fundamental denominators of the urban machine.

Through a series of interventions, these elements are destabilized, re-defined and made to produce a different form of life in Vancouver. This set of 'alter egos' raises questions about the role of infrastructure in city making and generates possibilities for its use as a tool for a more gregarious, public and dynamic city.



Title of Work: Lighter than air
Name: Aoibhin McGinley
School: Mackintosh School of Architecture, Glasgow School of Art
Hometown: Dublin, Ireland
Short Bio: Aoibhin studied at the Mackintosh School of Architecture, graduating in 2015 with Distinction. She was awarded the Chairman's medal for Best Architectural Thesis, a joint project undertaken with fellow student Ronan Morris. Their work was recently exhibited at the Royal Scottish Academy as part of the New Contemporaries Exhibition 2016 and the RIBA Silver Medal Exhibition.

Lighter than Air

This work, entitled 'Lighter than Air', explores the human desire to become ungrounded and inhabit the sky. The design is suspended between speculation and reality, an architecture with fantasy. Here the architect is cast as an explorer, discovering new boundaries, materials and atmospheres with which to work.

The fundamental link between advances in construction materials and architectural possibility are explored in this work. The thesis speculates on what could be achieved if architecture were created from the lightest and stiffest material in existence today - Graphene.

Graphene's physical, aesthetic and energy properties are developed to create a gravity defying leisure skyscape suspended above Tempelhof Field, Berlin in the distant future. Here a unique and adventurous stage is created to question and re-inform our definitions of architecture, and the environments and lifestyles it fosters.



John McAslan, Chairman

This exhibition showcases the work of some of our brightest young architects and highlights the impressive range of design talent the practice continues to attract.

I am delighted by the diversity of the innovative projects included here - including a bold reimagining of baroque structures, a water filtration project in Kathmandu, swimming pods for King's Cross, a test centre for space exploration, a coastal pilgrimage centre and a crematorium in Peckham.

In a sense this extraordinary show is a microcosm of the practice's ethos - encouraging everyone to think broadly, to question and challenge, and create imaginative, finely crafted work. Most importantly, it seems to me this exhibition addresses a fundamental question - how do we, as designers, respond to a constantly changing world and a bewildering range of global issues - social, environment and economic? What is our role, and what are our responsibilities as 21st-century architects? I think you will find some intriguing ideas showcased here.

John McAslan + Partners

JOHN MCASLAN + PARTNERS

Emerging Architects

Aoibhin McGinley / Glasgow School of Art
 Aubrey Zacharias / University of British Columbia
 Demetri Zacharia / The CASS School of Architecture
 Elena Petrasheva / University of Greenwich
 Eliot Hill / University of Westminster
 Ignacio Lee / Glasgow School of Art
 Jake Aiken Winter / The CASS School of Architecture
 Joe Travers-Jones / Bartlett School of Architecture
 Sophie Samuels / Manchester School of Architecture
 Luke Peckham / Liverpool School of Architecture
 Maeve Lock / Northumbria University
 Mirsad Krasniji / The CASS School of Architecture
 Neil Quinn / Central Saint Martins
 Oksana Lastovetsky / Dublin School of Architecture

Thomas Decker / Curator



Baroque to Berlin: A Structural Language

The thesis of this project addresses issues of translation and interpretation: exploring the non-static geometry of the Baroque era in an ambidextrous drawn and modelled analysis. The Church of San Lorenzo, Turin, Italy by Guarino Guarini, has been re-imagined in contemporary construction techniques using concrete as the primary material. The outcome is a 2 meter tall 1:20 plaster cast model - a revealed hidden structure has been studied to create an original tectonic proposition. Each element of the structure uses pre-cast joints to link to the next. The model is not glued together - its structural integrity relies solely on joints and gravity.

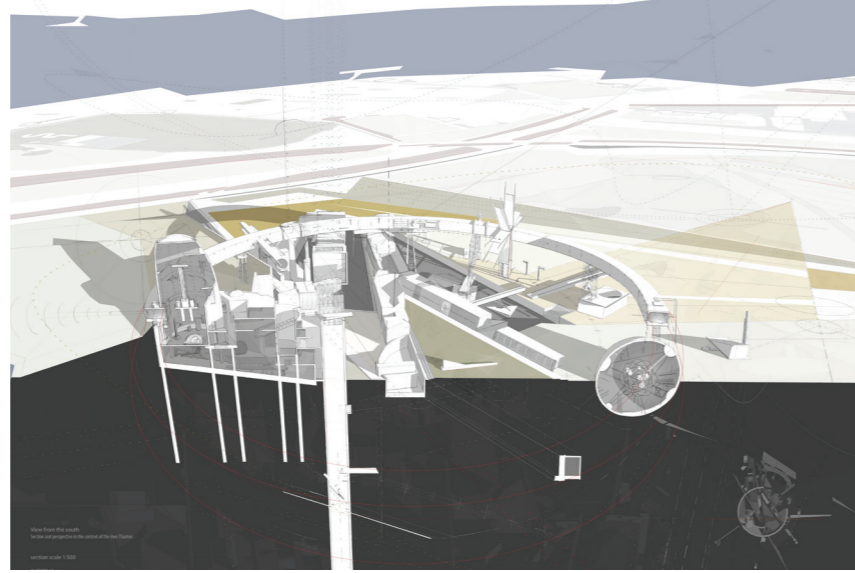
The focus of this project is the design of a specialist library and archive for post-war German art and photography in Bernauerstrasse, Berlin. Art publications, often produced in limited runs, take on the cultural and exchange values of scarcity. The library attempts to exploit a spatial hierarchy that affords varied levels of publicity, security and access. The arched column created was extracted from the geometric principles of San Lorenzo's structure forming unique floor plans and study spaces.



Title of Work: SUPREMACy
Name: Elena Petrasheva
School: Greenwch School of Architecture
Hometown: London
Short Bio: Elena joined John McAslan + Partners in 2015 as a Part I architectural assistant. She has worked on a number of projects in the UK and Russia. Since joining JMP, Elena has gained experience working on large scale residential projects mostly located in Moscow, Russia. Prior to this, Elena completed her BA in Architecture at University of Greenwich and Masters degree in Economics at KNEU back in Ukraine.

SUPREMACy

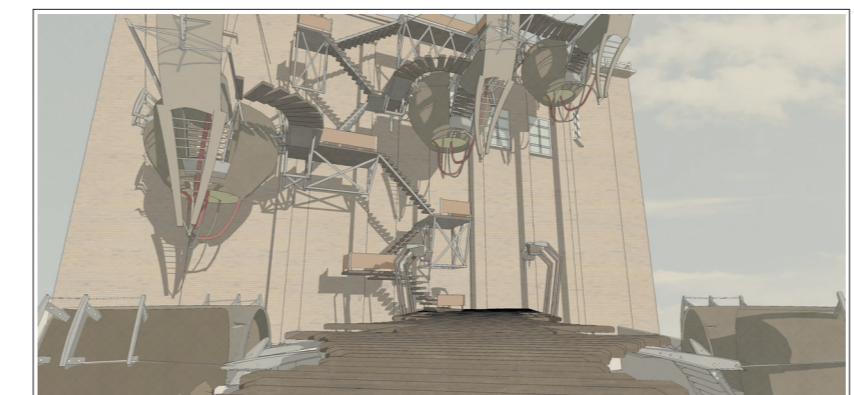
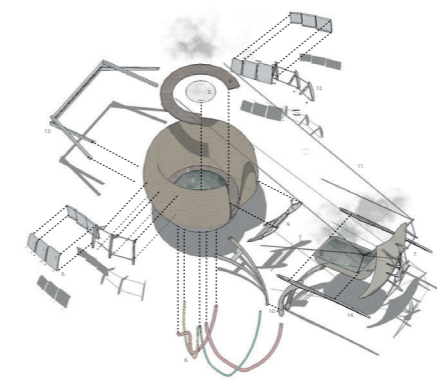
The project proposal is informed by research into Suprematism and its abstract approach to the generation of form, as a first attempt to reshape architecture with non-objective abstraction. The interpretative drawings and model created during the research process provided philosophical direction for the scheme, while the design concept is linked to man's need to explore space. Having Thamesmead as the site and the European Space Agency (ESA) as the client, the project became a test centre for space exploration. The centre houses core requirements for ESA but also provides a flexibility testing ground for future explorations. The final scheme benefited areas within the Thamesmead region.



Title of Work: King's Cross Swimming Pods
Name: Eliot Hill
School: University of Westminster
Hometown: Frinton-On-Sea
Short Bio: Eliot joined John McAslan + Partners in 2014 as a Part I architectural assistant. He has worked on a number of projects in the UK and Russia. Since joining JMP, Eliot has gained experience working on Education, Cultural and residential projects particularly from concept stage through to planning. Prior to this, Eliot completed his BA in Architecture at University of Westminster.

King's Cross Swimming Pods

The project is set in the heart of King's Cross and proposes an idealised public space for an open air swimming pool. The concept of the proposal seeks to use a pool as a social place of interaction through small pods set in the dense urban fabric, acting as a catalyst for conversation about the past, through the means of showing previous films of the three particular points in time that reflect the site. The project offers users a chance to remember a forgotten period in time, by suggesting dialogues between users that create new conversations about the past and present.

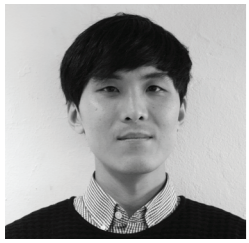


DEATH IN PECKHAM

Title of Work: DEATH IN PECKHAM
Name: Joe Travers-Jones
School: The Bartlett School of Architecture
Hometown: Ogmore by Sea, S WALES
Short Bio: Joe joined John McAslan + Partners in 2014 as a Part I architectural assistant. He has worked on a number of projects in the UK. Since joining JMP, Joe has gained experience working on residential and commercial projects particularly from concept stage through to planning.

Death in Peckham

The crematorium directly confronts the psychological impacts of loss and bereavement and the effect that this may have on well-being. The project explores death through the process by which a loved one is mourned. The building explores procession through a highly choreographed sequence of spaces, an aspect of mourning that exists in some form in the funeral rites of many cultures. Each stage is experienced at a human scale with an emphasis being placed on the private nature of grief and the emotions felt through the grieving process from remembrance in the gardens and chapel to celebration on the roof. Circulation through the building is thoughtfully guided by the changing light conditions influenced by the use of materials. The materiality and light conditions acted as a driving force for the project creating considered moments within the building where the feeling and atmosphere of the space influences the emotional wellbeing of the user.



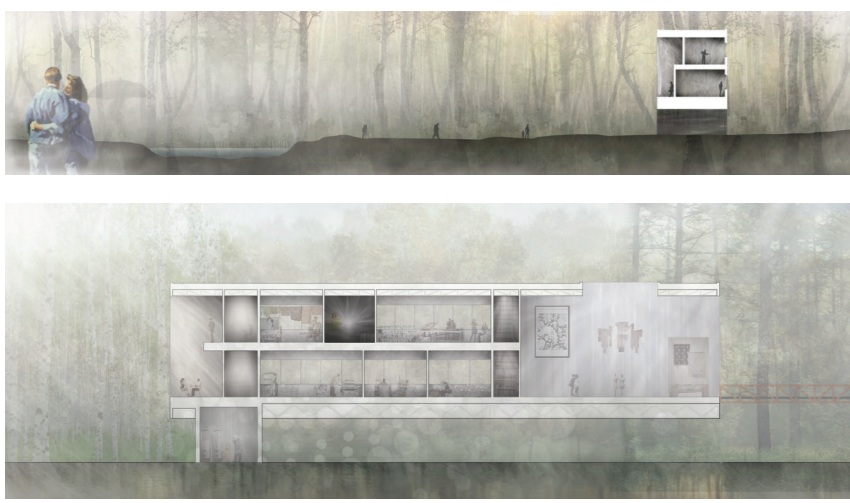
Contextile: Contemporary Textile Research Centre

'A Place to Work'

In the core 3rd Year studio project, the students were asked to design a building for 'Contextile', a fictional group of twenty young designers who, currently working in independent studios, are coming together to form a collective based in Pollok Park, Glasgow.

As a collective, their ethos is 'to be kind to the planet, treat people well and develop the fabric of life' within a building that is an enlightening, enjoyable and delightful place of work, and which is an engaging, comfortable and healthy environment for the visitor.

The new building provides a wonderful opportunity to make a positive addition to this well loved landscape within the city of Glasgow's Pollok Park.

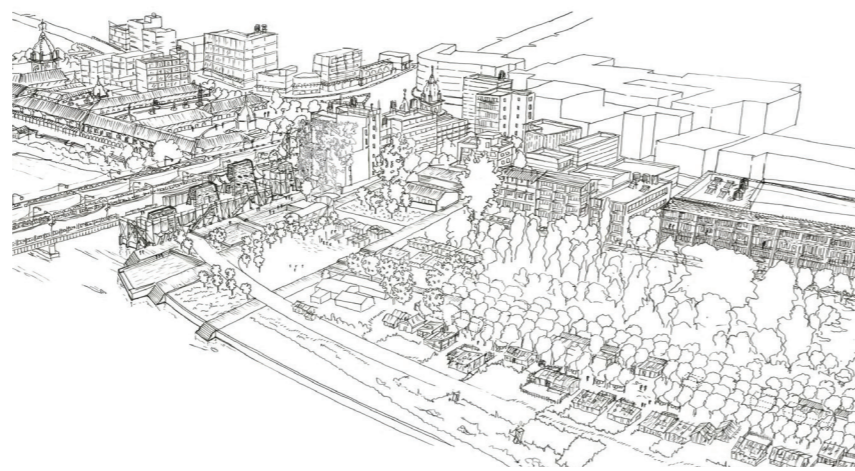


Title of Work: The Water Guardians of Kathmandu
Name: Jake Aiken Winter
School: CASS School of Art, Architecture & Design (LJMU)
Hometown: Botolph Claydon

Short Bio: Jake has been working with John McAslan + Partners since 2015 on large London housing projects in difficult to deliver contexts. He graduated from the Cass School of Art, Architecture & Design with a Distinction for his research on the formation of unofficial urban pocket settlements. He has worked both in London and New Delhi and at the weekend he enjoys walking his dog.

The Water Guardians of Kathmandu

On the banks of the Bagmati River in Kathmandu, beneath bamboo and tarpaulin tents live the 'sukumbasi' (The Landless People). They are the workers, the labourers and the service industry for Kathmandu. Through a Metamorphosis of name and occupation from the "The Landless People" to "The Water Guardians of Kathmandu", they become protectors and inhabitants of a public River Filtration Infrastructure project to give their temporary existence a permanent place within the city's fabric.

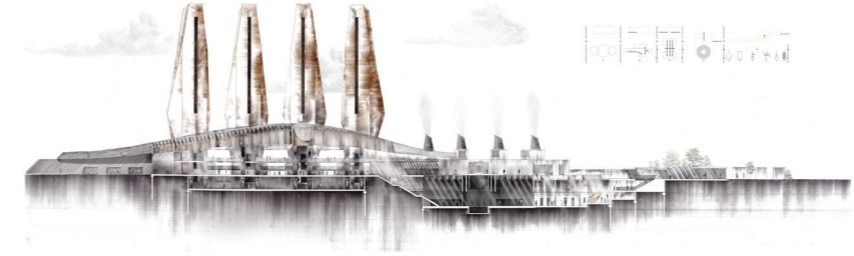
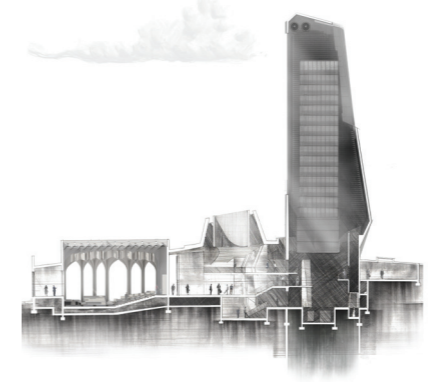


Title of Work: Goonhilly Congress
Name: Luke Peckham
School: Liverpool School of Architecture
Hometown: Tidworth, Wiltshire
Short Bio: Luke joined John McAslan + Partners in 2015 as a Part II architectural assistant.

Since joining JMP, Luke has gained experience working on large residential projects. Luke's prior experience has been in single family high-end residential projects in London through which he developed his interest in contemporary detailing. During his studies he explored the potential impacts of advances in communication and technology upon the built environment and acted as a guest critic for the undergraduate course at the University of Liverpool.

Goonhilly Congress

The Goonhilly Congress was conceived in response to the 500th Anniversary of the Magna Carta and the 25th Anniversary of the internet. The project is a response to the growing concerns over the freedoms and privacy of communication in the modern age. The Eden Project strove to educate and promote environmental awareness - the Goonhilly Congress would be the technologically focused successor to the Eden Project.



Title of Work: A Pause in a Pilgrimage
Name: Maeve Lock
School: Northumbria University
Hometown: Frome, Somerset
Short Bio: Maeve joined John McAslan + Partners in 2014 as a Part I architectural visualiser. She has worked on numerous projects located worldwide. Since joining JMP, Maeve has continued to learn from her mentors different skills of how to portray architecture through visualisations. The projects she has worked on have been varied and have offered her the opportunity to see into all sectors of architecture that John McAslan + Partners are involved in.

A Pause in a Pilgrimage

Settled within the rolling dunes of Druridge Bay the visitor centre combines a place of shelter along a bustling coast line, and a node visible between two distinct typologies. The repetitive nature of the building relates directly back to anti tanking blocks once neatly lined out on the beach. Each block represents a different experience, both in form and in activity, allowing the visitor to travel with ease through the centre.

The location for the project was chosen due to existing foot paths on the dunes, these informed the axis of the building, these paths have been 'housed' lending itself to being able to merge itself within its context. No path is interrupted, no journey changed. An atmosphere has been created, through materiality and simplistic design, to enhance the emotive response that so many have to the coast.



Nobiru Sea Wall Hotel & Public Lido

This 5th year project thesis is situated in Nobiru, a town within the prefecture of Miyagi, Japan. It is a coastal town which was devastated by the Tohoku Earthquake & Tsunami in 2011, which destroyed 70% of the built environment in Nobiru, including homes, schools, coastal hotels, and leaving the Nobiru community traumatised by the unfortunate event. As a result, the government of Japan has built a 7.2m high sea wall, depriving the traditionally coastal community of access to Nobiru Beach. The proposal is for a Sea Wall Hotel & Public Lido, which aims to restore tourism in Nobiru, and also to reconnect the community of Nobiru to the sea. The hotel and its public spaces turn the sea wall into a destination rather than a barrier, allowing the community to experience the sea again at various levels through the public Lido and also Sea Wall Promenade.

Title of Work: Nobiru Sea Wall Hotel & Public Lido
Name: Mirsad Krasniji
School: CASS School of Architecture (LJMU)
Hometown: London
Short Bio: Mirsad joined John McAslan + Partners in 2014 as a Part II architectural assistant. He has worked on a number of projects in the UK, Haiti and Hong Kong. Since joining JMP, Mirsad has gained experience working on education, cultural and residential projects through all of the RIBA stages. Prior to this, Mirsad completed his Part 2 studies at the CASS School of Architecture (formerly LJMU).



Title of Work: Selfridges 'No Noise' House / Build 4 Sustainable Demo Centre
Name: Neil Quinn
School: Central Saint Martins
Hometown: Kilkenny, Rep. of Ireland
Short Bio: Neil joined John McAslan + Partners in 2015 as a Part I architectural assistant.

Being a resident of Tottenham, Neil has a strong connection with the practice's N17 Design studio and a number of projects within the N17 area. Since joining JMP, Neil has gained experience primarily working on residential projects particularly from concept stage through to planning. Prior to this Neil completed his BA in Architecture at Central Saint Martins.



Build 4 Sustainable Demonstration Centre

Build 4 is a dynamic and creative space located in Dover, Kent, in a new industrial unit. Fitted out completely with eco-materials, CAP'EM invites the wide audience it attracts to come inside and see the materials in situ and on display. Build 4 has the capacity to host small events/meetings/trainings/ and encourage manufacturers and innovators of eco-materials to utilise the space for focus groups, exhibition purposes and training in the use of the materials.

Selfridges - House for 'No Noise'

In an initiative that goes beyond retail, Selfridges invited the users to celebrate the power of quiet, to see the beauty in the function and find calm amongst the crowds. Based in the flagship Oxford Street store, the House for 'No Noise' was achieved by slicing a home through its centre, exposing 'departments', each with a design function to incorporate the 'No Noise' criteria.



Title of Work: Fab Lab City: Monumentality in architecture - its aspirations and relevance to the human scale.
Name: Oksana Lastovetsky
School: Dublin School of Architecture
Hometown: Dublin

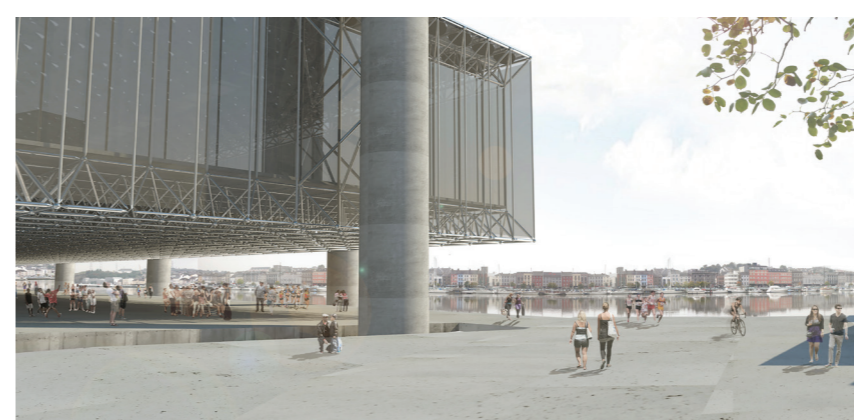
Short Bio: Raised in Ireland and born in Moscow - moved to London at the end of last year as a graduate Part II architect. I studied in the Dublin School of Architecture. I studied in the Dublin School of Architecture - where we were encouraged to experiment, stand out, but were always brought down to earth by an emphasis on structure and construction.

Fab Lab City: Monumentality in architecture - its aspirations and relevance to the human scale.

"Every project is essentially utopian or ideal until the last phase of its construction. The execution of the project marks the end of utopia, which is then transformed into a program and maintains in man the hope of a better world, thus becoming a source of new utopias."

Pascaline Guillier

This thesis is a study of architectural and urban strategies that are publicly considered to be Monumental - in scale, form or concept. We have preconceived ideas about such architectural moves, and oftentimes, both monumental and utopian ideas are infamous for not addressing the human scale and the single person's needs. Usually, the grand idea prevails, so there is a definite lack of intimacy in the details of both concept (which is forgivable) and end product (which is less desirable).



Title of Work: White Energy and Black Swans; The Legacy of Coventry's Synthetic Biotope
Name: Sophie Samuels
School: Manchester School of Architecture
Hometown: Lytham, Lancashire

Short Bio: Sophie joined John McAslan + Partners in 2015 as a Part II architectural assistant. Since joining JMP, she has worked on a range of projects. In particular she has experience in residential, cultural and hotel schemes which include Milkbank Tower, Lillie Square and Ashley Road. Prior to working at JMP, Sophie worked in LA at an experimental studio, FPMOD and at MAKE Architects, London. For Sophie, architecture is the relationship between logic and one's imagination to create a habitable space for individuals.

White Energy and Black Swans; The Legacy of Coventry's Synthetic Biotope

What if the future of energy production and usage is clean, abundant and negative carbon whilst also healing our current environmental crisis?

This thesis project is influenced by the global fears of dissipating energy resources, consumption and pollution. The proposal looks at a large brownfield site in Coventry through a green lens: injecting the grey industrial grain and surrounding urban context with a dose of cultivation gardens and pools.

The vision is for a site specific and future typology of an urban field that enables energy production to be grown and formed locally in our cities. The architecture becomes a super green manifestation, whereby the natural and unnatural become completely blurred by engineering and mutating nature to grow new natures that are more efficient and useful than the nature that we know of today, the very nature that we have been rapidly depleting and destroying over the last century.

